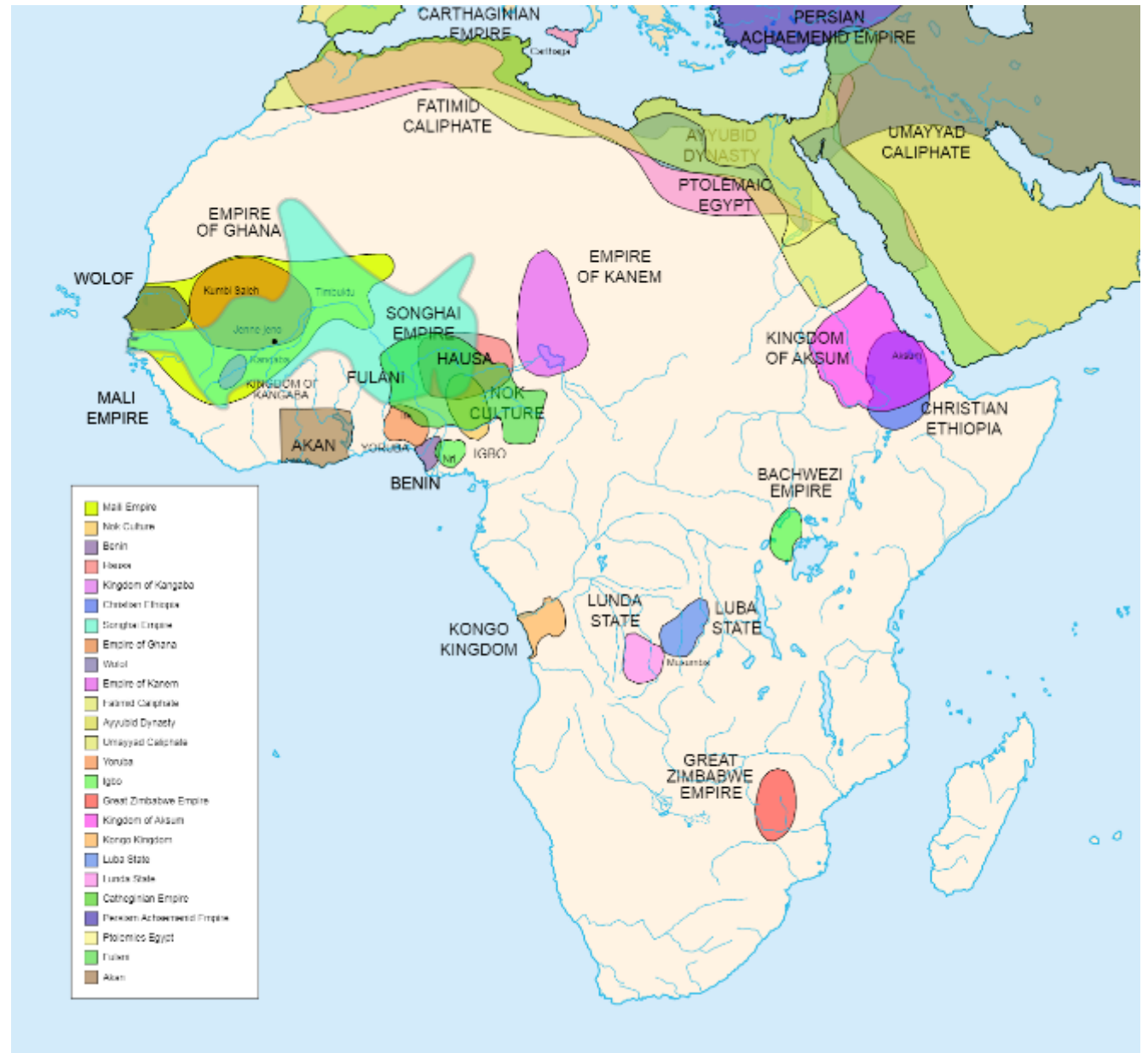
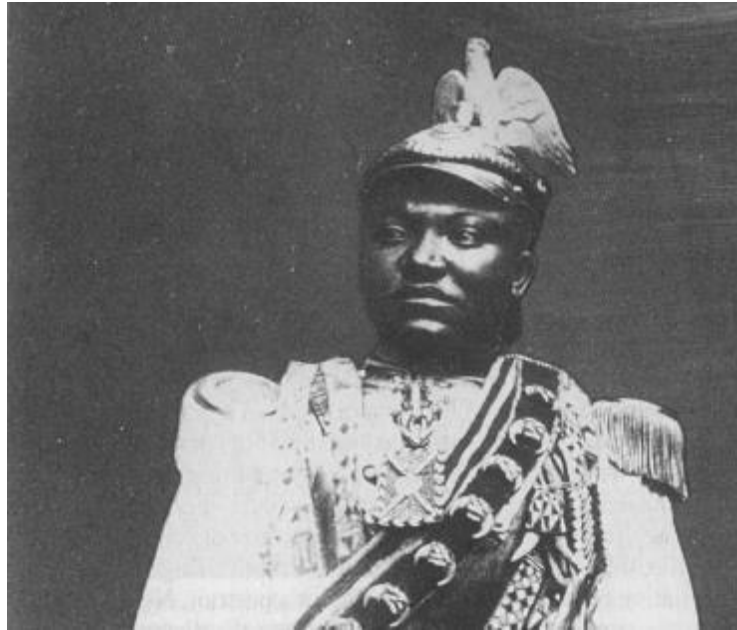


Visualizing Dominance

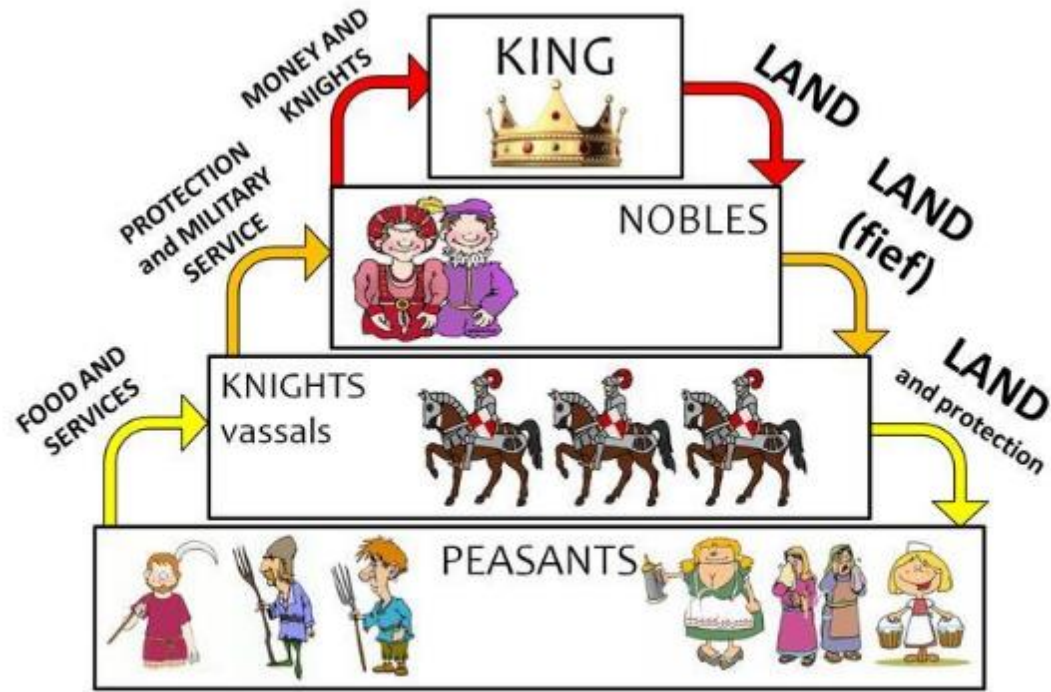
with Dr. Edwin Johnson

There is a history of kingdoms and empires throughout the continent of Africa





There is much mystique
associated with African kingdoms

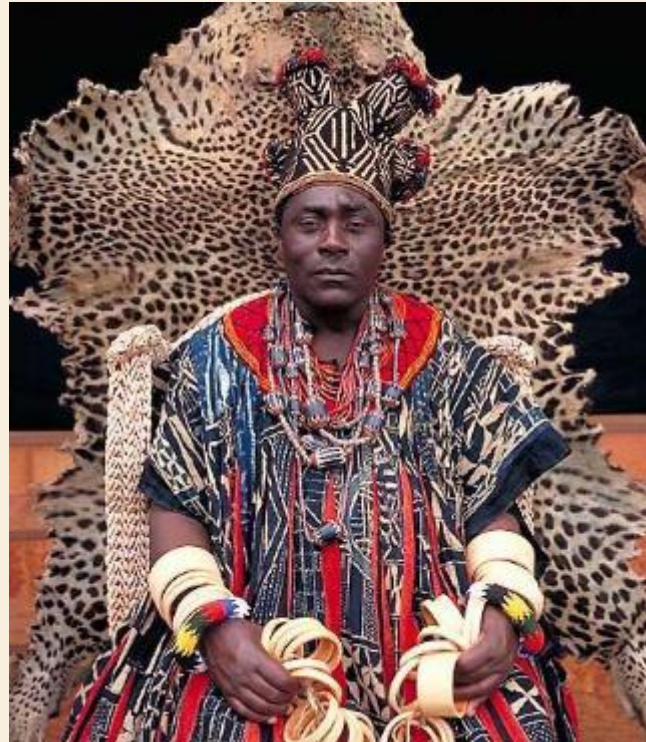


Feudal Pyramid of Power

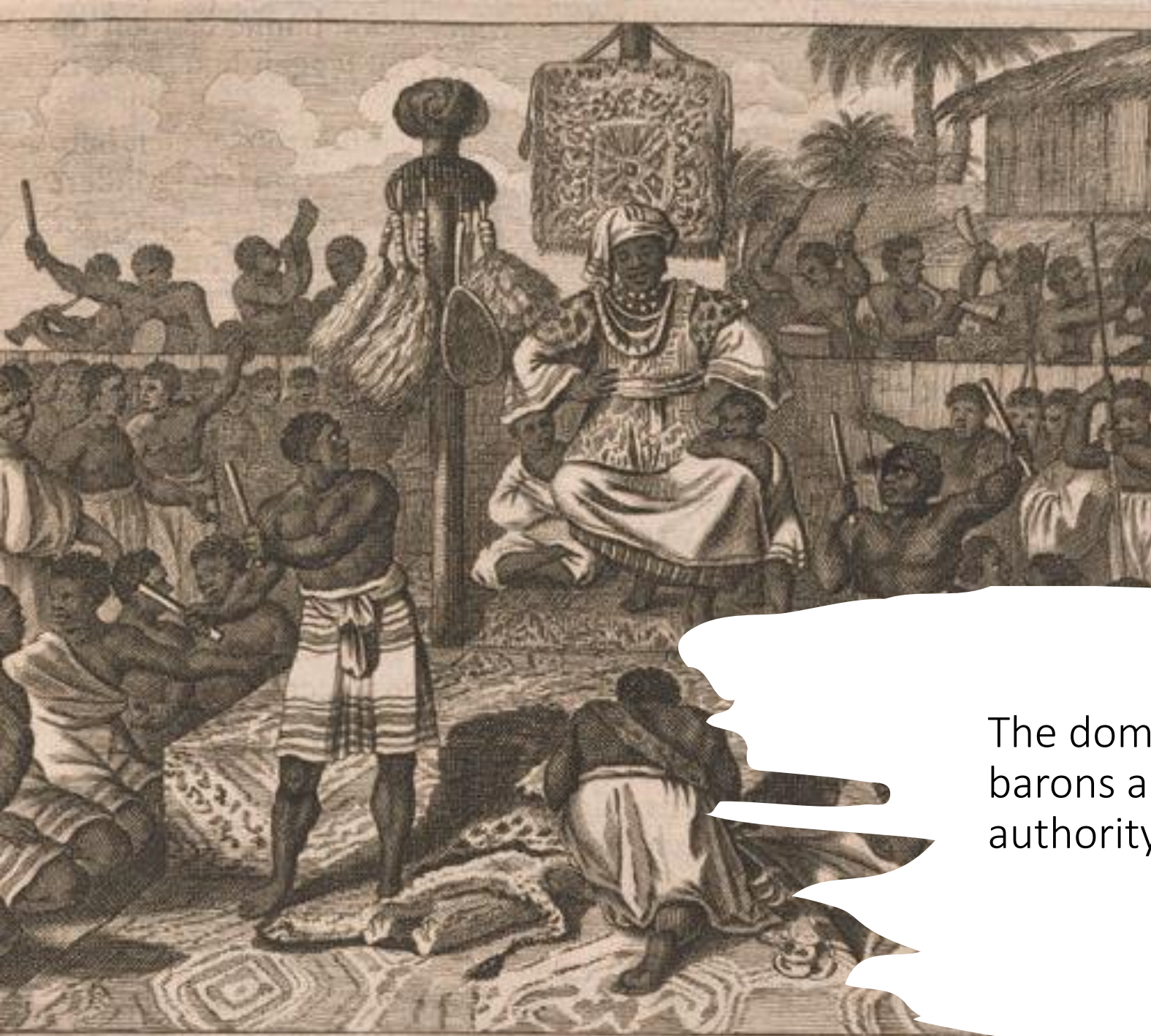


Feudalism as a pyramidal political paradigm

The fortunes of African kingdoms were determined by many factors



- Executive expertise of the sovereign
- Perceived power and reputation of the sovereign
- Unity within the ruling family
- Loyalty of feudal vassals
- Infrastructural integrity
- Economic dynamism and vigor of the state
- Military capability and doctrine
- Fidelity of the sovereign's subjects
- Diplomatic standing and political clout in relation to foreign states
- Other realpolitikal factors



The dominance of the sovereign over the barons and other nobility, in addition to his authority over his commoner subjects.



The viability of the state is dependent on the perceptions and realities of its strength and integrity.

6186.



Deficiencies can undermine national security and jeopardize the sovereignty of the state.

The King of Benin just captured, on board H. M. Yacht "Argo". His expression is very solemn, expecting to be condemned to death. Royal Mail steamer "Shokh". Coll. A. Maschmann.



Perception of power
through the theater of
the royal court



The Golden Stool and the Asantehene of the Ashanti of Ghana



Yoruba kingship

- Ooni of Ile-Ife
- Alapomu of Apomu



Symbolism of
birds and
faces



Symbols of divine
royal descent from
Odudua

Yoruba palace doors
representing the
courtly





Ikengobo (Altar to the Right Hand) of the *oba* (king) of the Kingdom of Benin in Nigeria

Perpetuation of dynastic power through the cult of kingship in the Kingdom of Benin in Nigeria





Sultan Ibrahim Njoya and two thrones of the Bamun Kingdom of the Cameroon Grasslands



The Fon of the
Kom of
Cameroon and
Mbang statues



The royal regalia
of the king of the
Kuba in the
Democratic
Republic of
Congo.



The use of secrecy, separation and architecture as symbols of Shona royal power in Great Zimbabwe of the Mutapa Kingdom



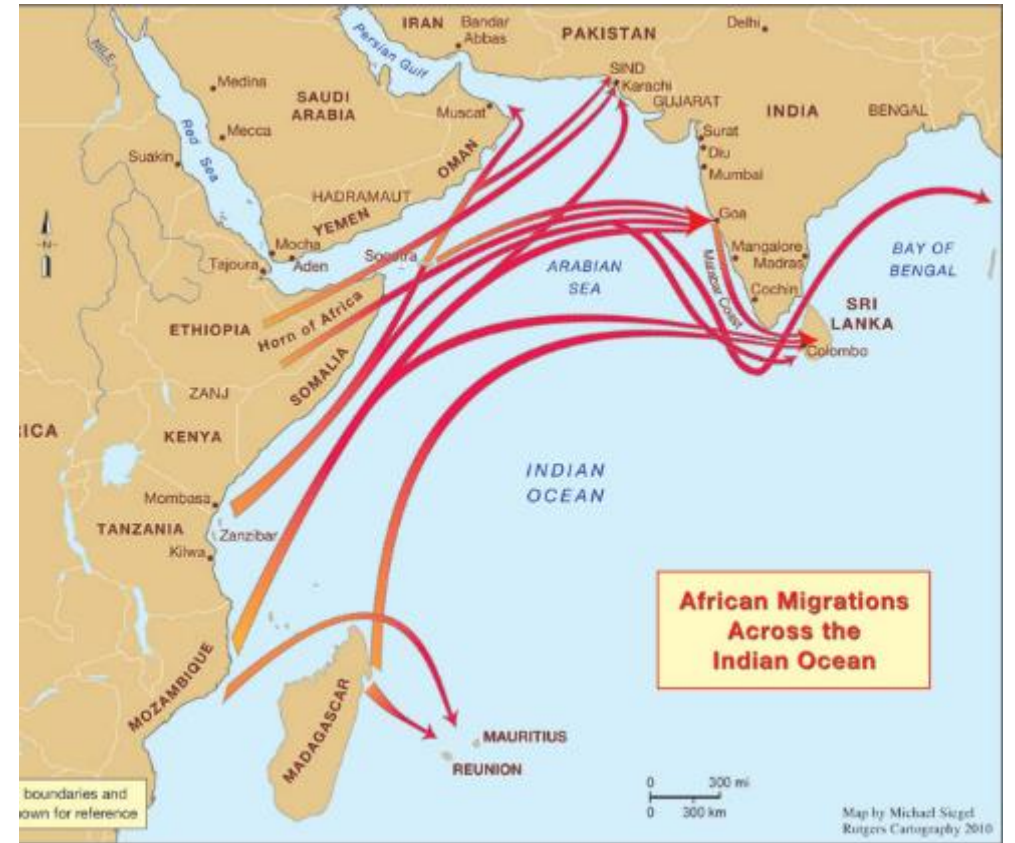
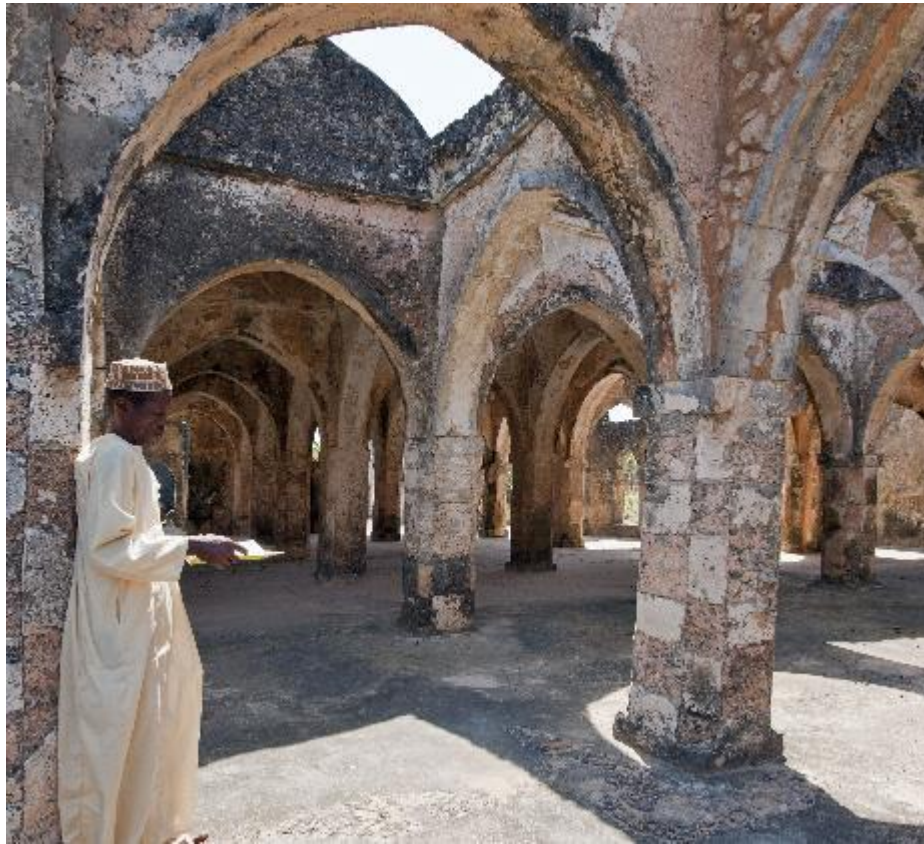


Part of a larger series of complexes that stored wealth in the form of gold, and cattle



Walled
passages to
seats of
power and
wealth

Tied to a larger network of global trade in Arabia and the Indian Ocean generating great wealth for Shona kings.





Any Questions?